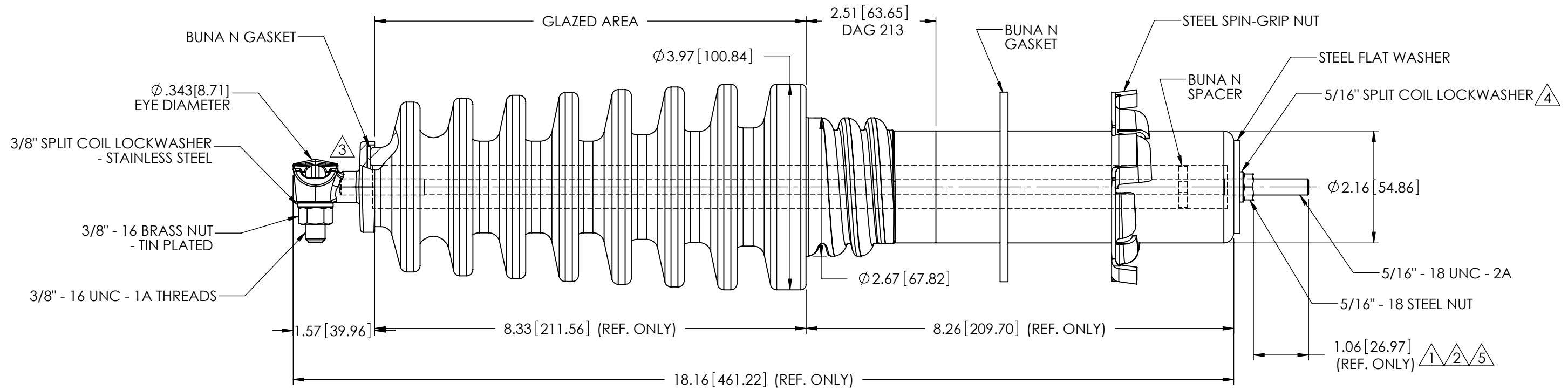
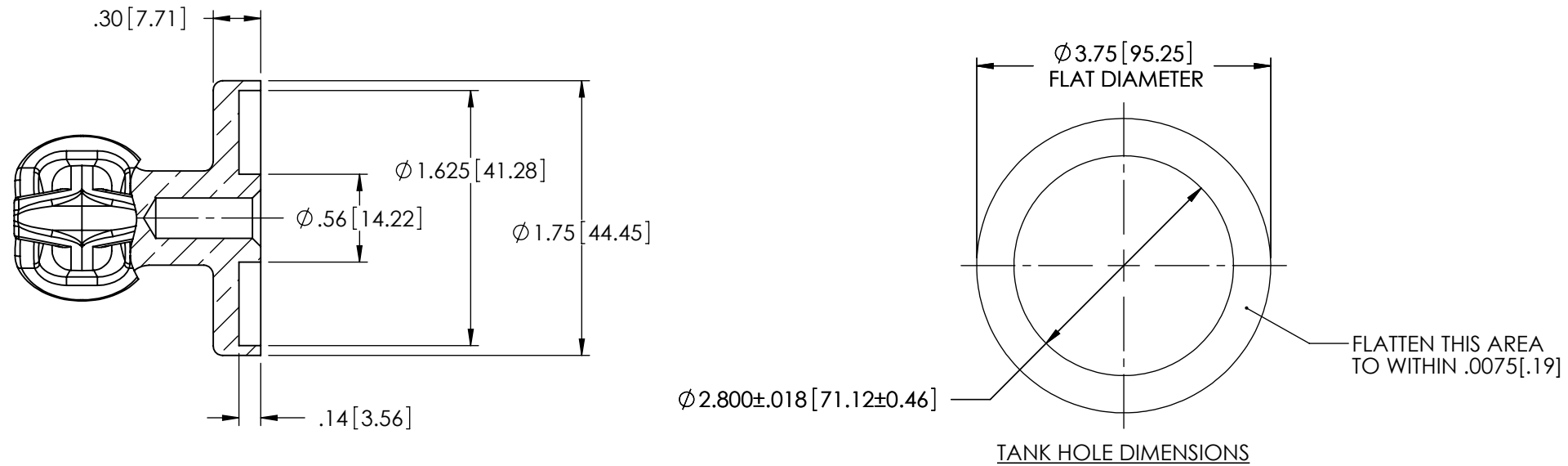


REVISIONS					
REV.	DATE	ECN #	DESCRIPTION	BY	APPROVED
1	9/18/2009		ADDED DIMENSION.	JH	
2	9/22/2009	HJ09-153	.56" WAS .43"	JH	JFS
3	10/15/2009	HJ09-165	REMOVED BAYONET LOCK.	JH	JFS
4	3/3/2010		REMOVED "STAINLESS STEEL"	JH	
5	6/13/2014	HJ14-120	STUD LENGTH INCREASED BY 0.50"	CLS	BLB



SPECIFICATIONS:

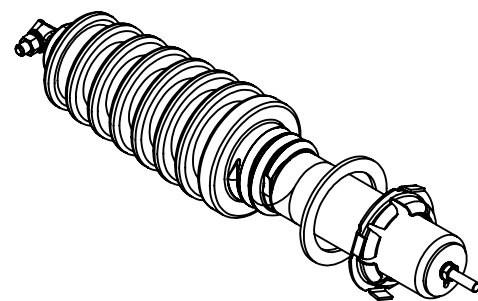
1. RATED VOLTAGE.....18kV
2. BASIC IMPULSE LEVEL.....125kV
3. STRIKE DISTANCE.....8.75" [222.25mm]
4. CREEP DISTANCE.....17.75" [450.85mm]
5. APPROXIMATE WEIGHT.....7.2 LBS

MATERIAL:

1. CAP - C84400 TIN PLATED
2. EYEBOLT - C95500 TIN PLATED
3. STUD - 1008-1010 STEEL ROD PHOSPHATIZED

PORCELAIN NOTES:

1. WET PROCESS ELECTRICAL PORCELAIN.
2. GRAY GLAZE MUNSELL 5BG 7.0/0.4
3. TOLERANCE $\pm 3\%$ WITH NOTHING LESS THAN $\pm .03"$, UNLESS OTHERWISE NOTED.



PROPRIETARY AND CONFIDENTIAL
 THE INFORMATION CONTAINED IN THIS DRAWING IS THE SOLE PROPERTY OF H-J ENTERPRISES, INC. ANY REPRODUCTION IN PART OR AS A WHOLE WITHOUT THE WRITTEN PERMISSION OF H-J ENTERPRISES, INC. IS PROHIBITED.

TOLERANCES (EXCEPT AS NOTED)	
DECIMAL	+/- .032"/.8mm
FRACTIONAL	+/-
ANGULAR	+/- 2 Degrees



H - J ENTERPRISES, INC.
 3010 HIGH RIDGE BLVD. HIGH RIDGE, MO. 63049 USA
 PHONE 1-636-677-3421 FAX 1-636-376-1915

18kV - 125kV BIL H.V. BUSHING ASSEMBLY

MATERIAL (SEE DRAWING)

CHK'D	NK	APP'D	06/13/14	DRAWING NO.
		SCALE	N.T.S.	AS1608-001

DRAWN BY JH

DATE 9/10/2009